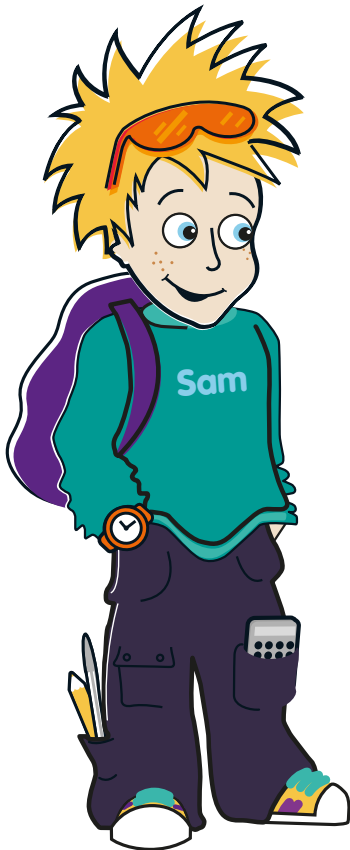


# Good time keeping means ...

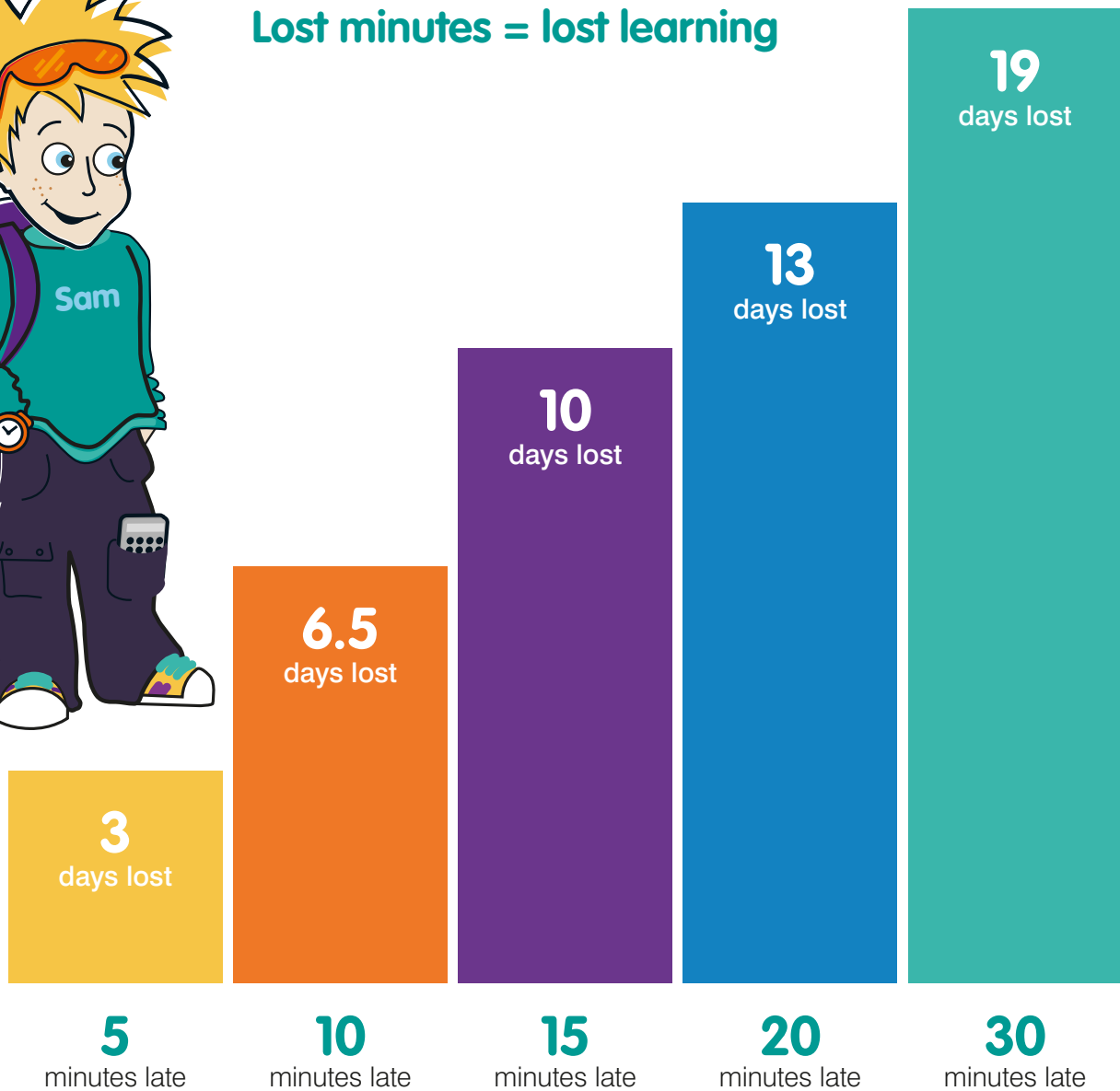
Making sure your child is at school  
and ready to learn, before the bell rings!



**Doncaster**  
Metropolitan Borough Council



**Lost minutes = lost learning**



**Every school day counts**  
but every **minute** is equally important!

## Did you know?

Being 15 minutes late each day is the same as missing two weeks of school!\*

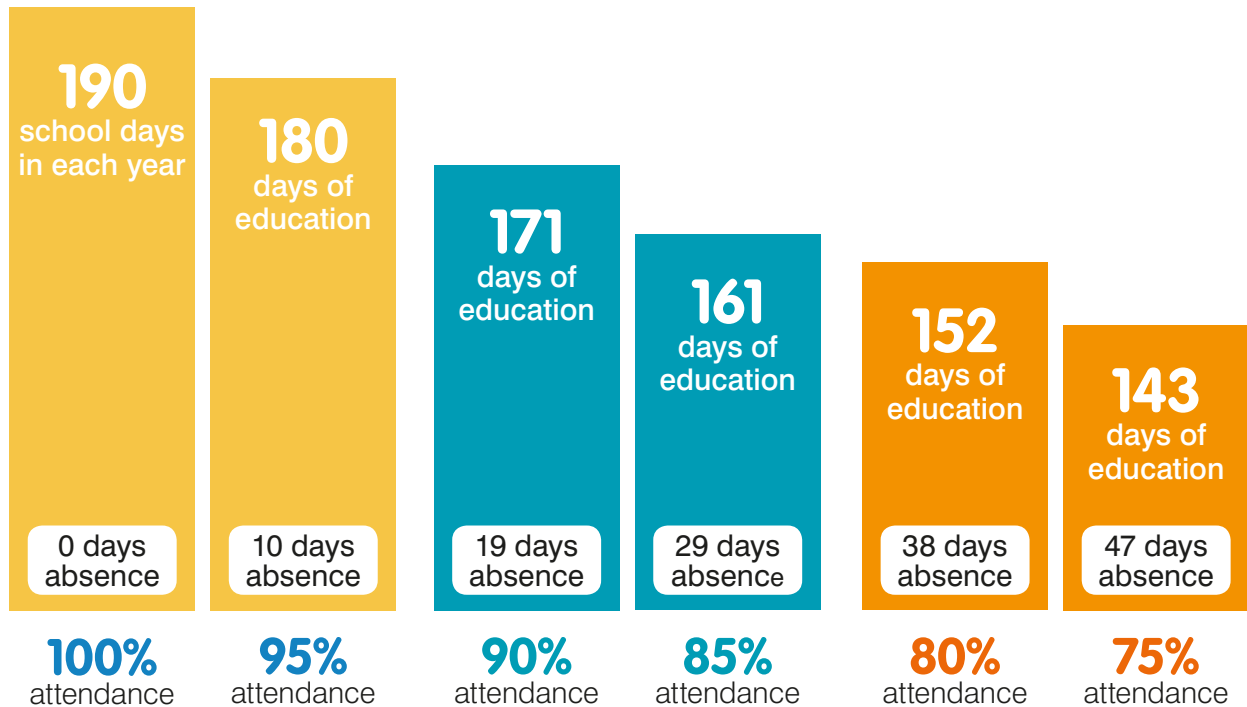
\*Over one full academic year

# Good attendance means ...

Being in school at least 95% of the time  
or 180 to 190 days ...



**Doncaster**  
Metropolitan Borough Council



“Well Done”

“I’m worried”

“I’m seriously concerned”

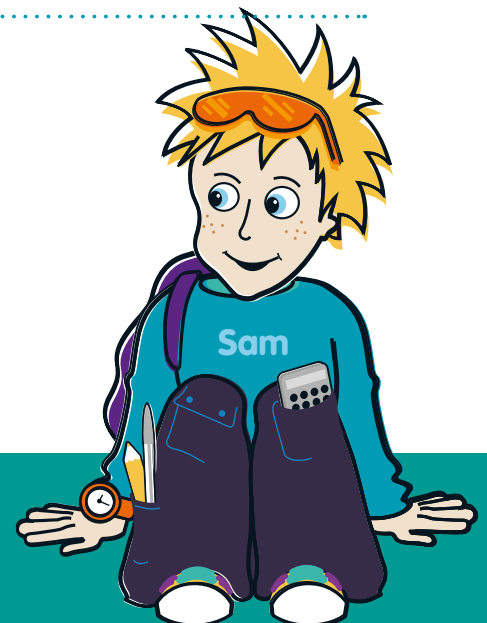
Best chance of success

Poor attendance—less chance of success

Very poor attendance—serious impact on education and reduces life chances

There are 365 days in a calendar year

175 days are not spent at school  
So there’s plenty of time for shopping, holidays and appointments



**Did you know?** A two week holiday in term time means that the highest attendance a child can achieve is 94.7%